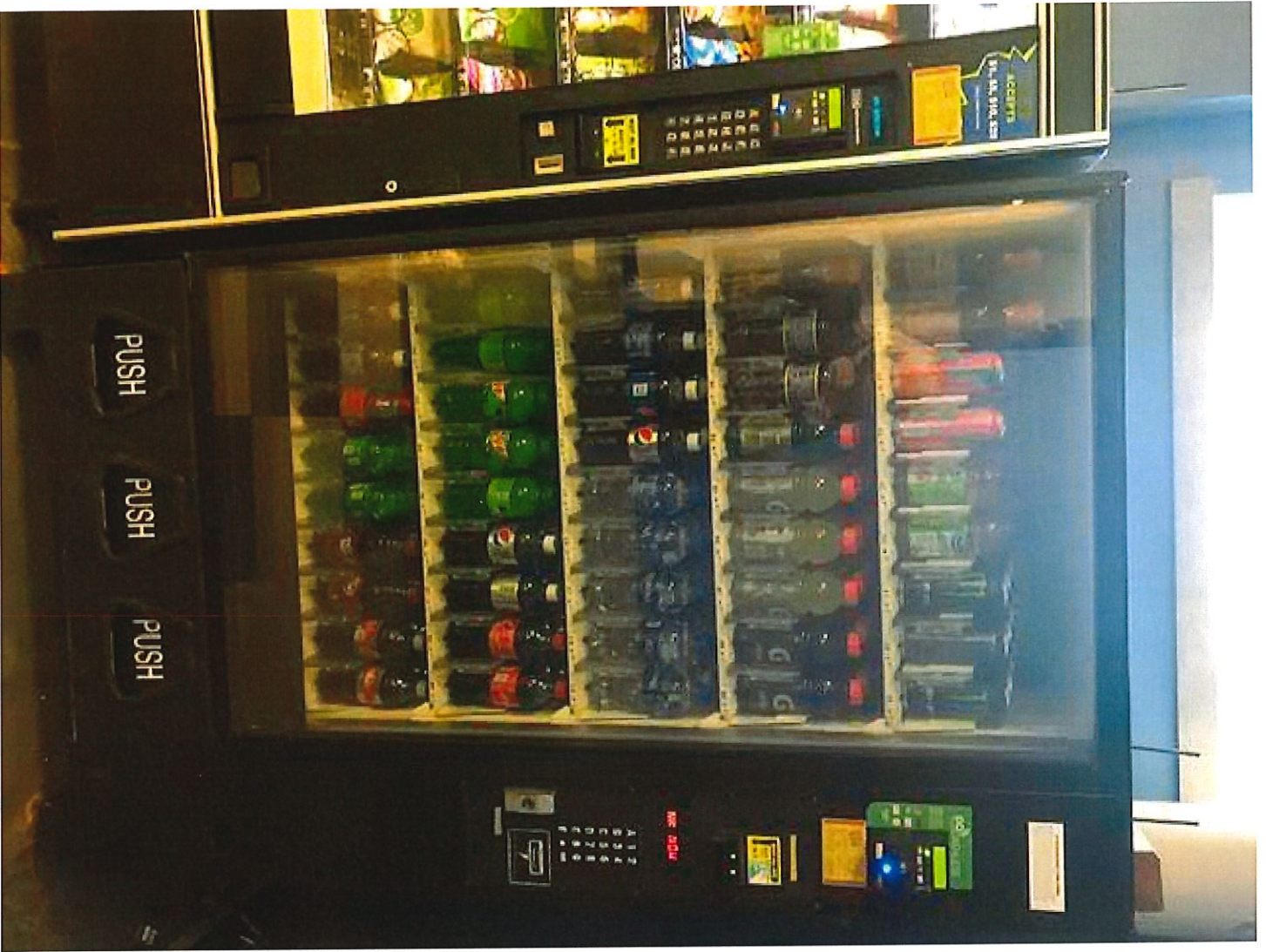


Rapid Operation Center
Mechanics Breakroom
333 Wealthy St, SW
Grand Rapids, MI



Rapid Administrative Offices
Basement Operator Breakroom
300 Ellsworth Avenue SW
Grand Rapids, MI

Rapid Administrative Offices
Basement Operator Breakroom
300 Ellsworth Avenue SW
Grand Rapids, MI





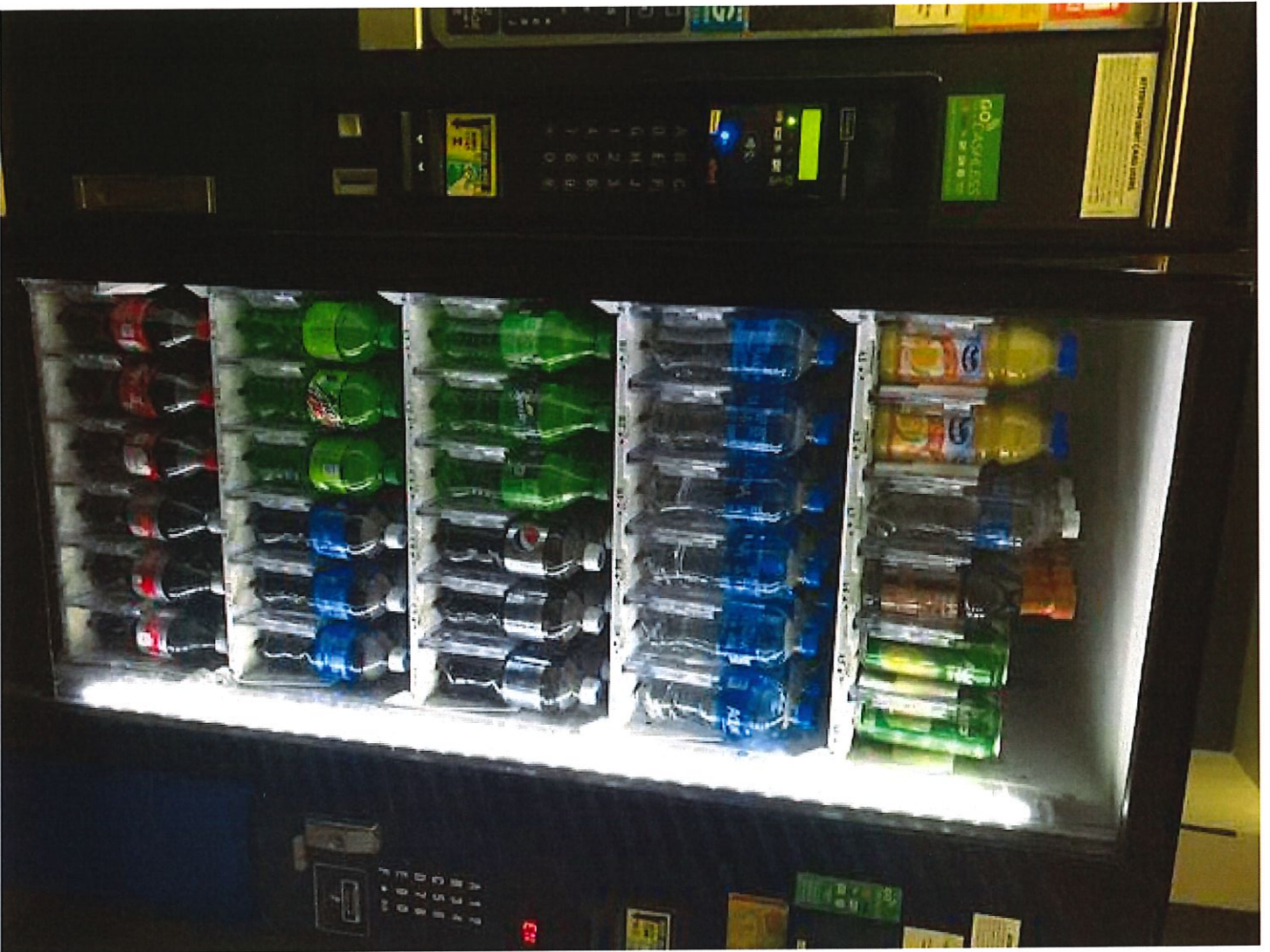
Rapid Administrative Offices
Basement Operator Breakroom
300 Ellsworth Avenue SW
Grand Rapids, MI



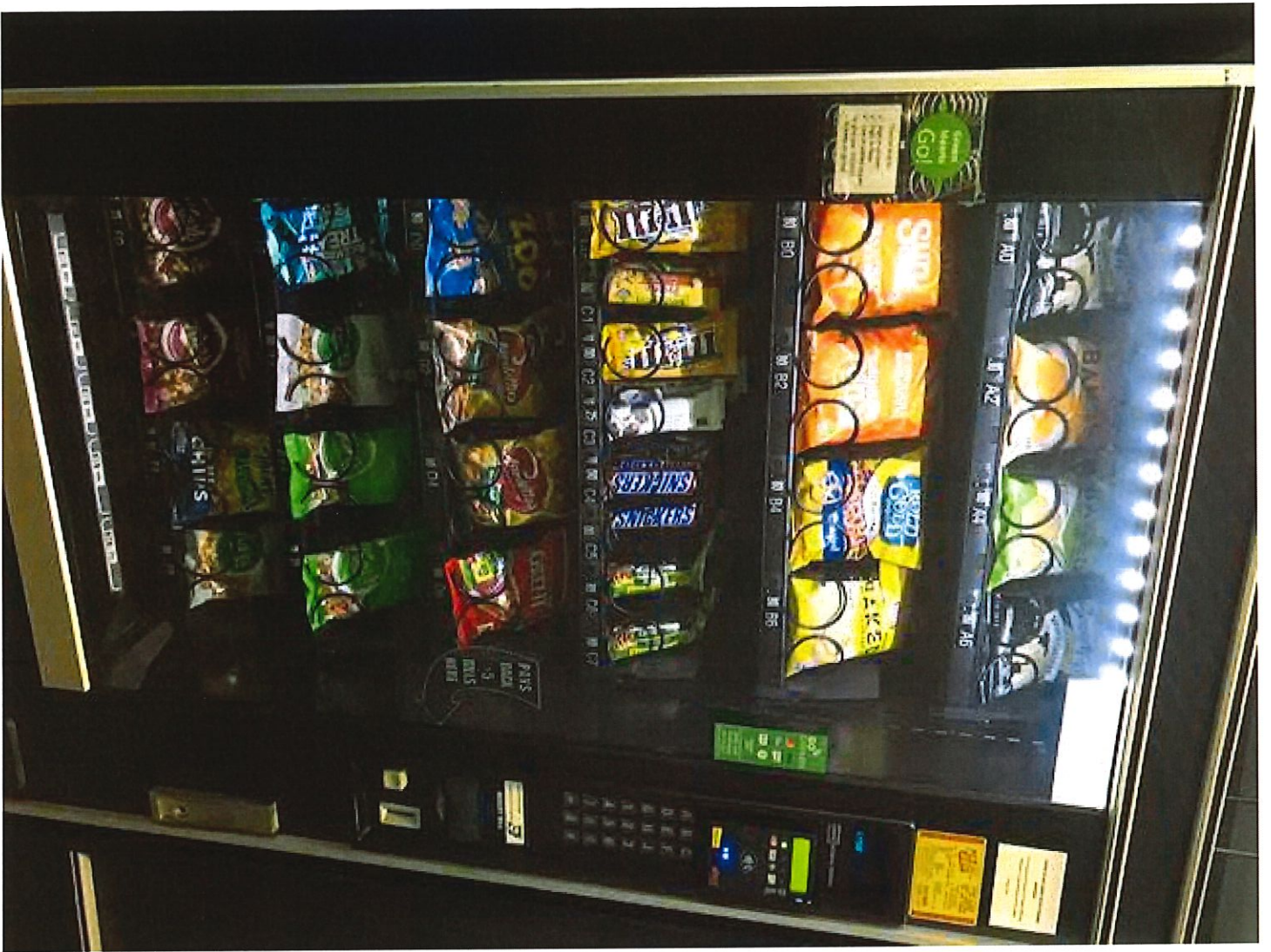
Rapid Operation Center
Employee Breakroom
333 Wealthy St, SW
Grand Rapids, MI



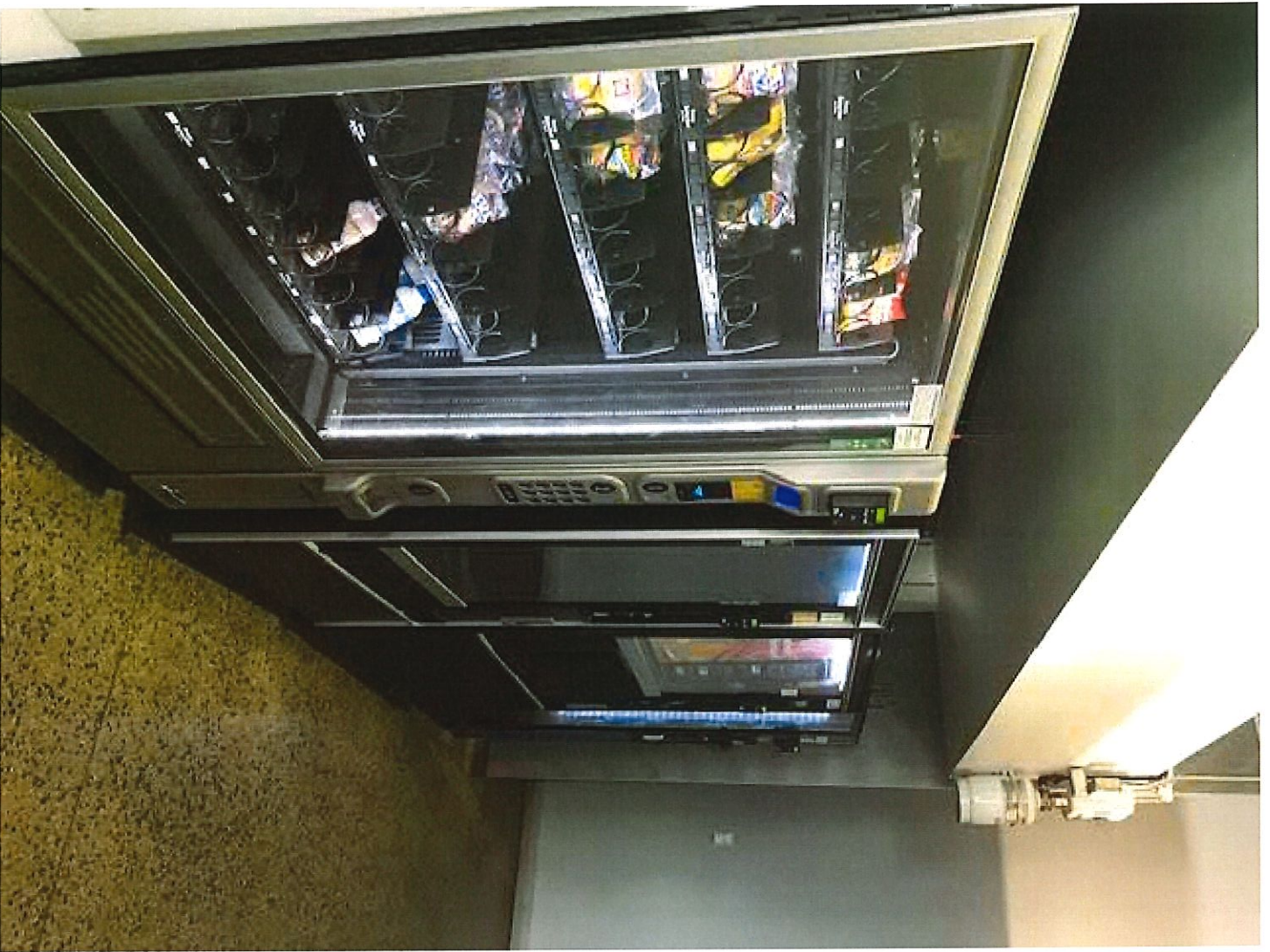
Rapid Operation Center
Employee Breakroom
333 Wealthy St, SW
Grand Rapids, MI



Rapid Operation Center
Employee Breakroom
333 Wealthy St, SW
Grand Rapids, MI



Rapid Operation Center
Employee Breakroom
333 Wealthy St, SW
Grand Rapids, MI



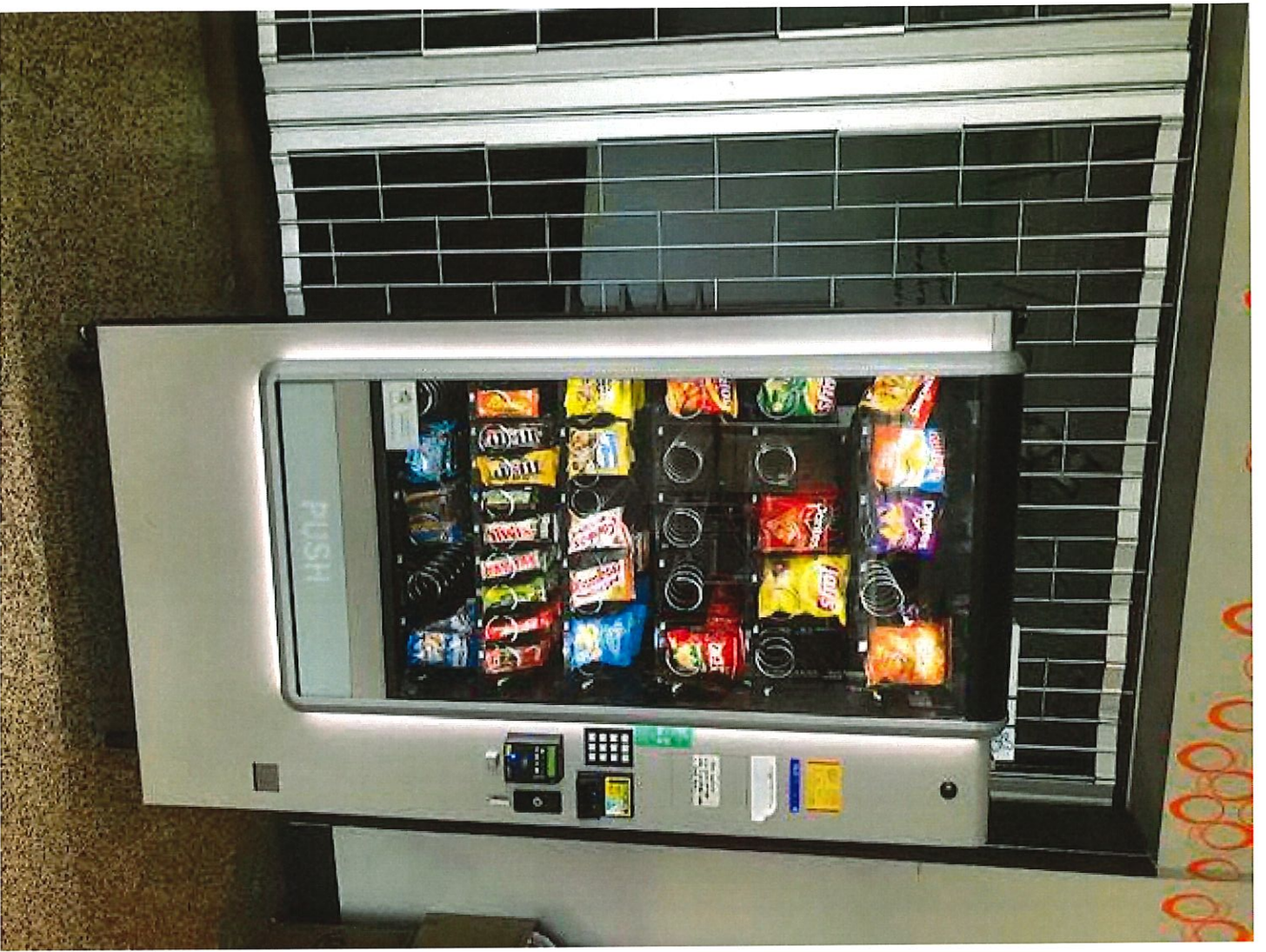
Rapid Operation Center
Employee Breakroom
333 Wealthy St, SW
Grand Rapids, MI



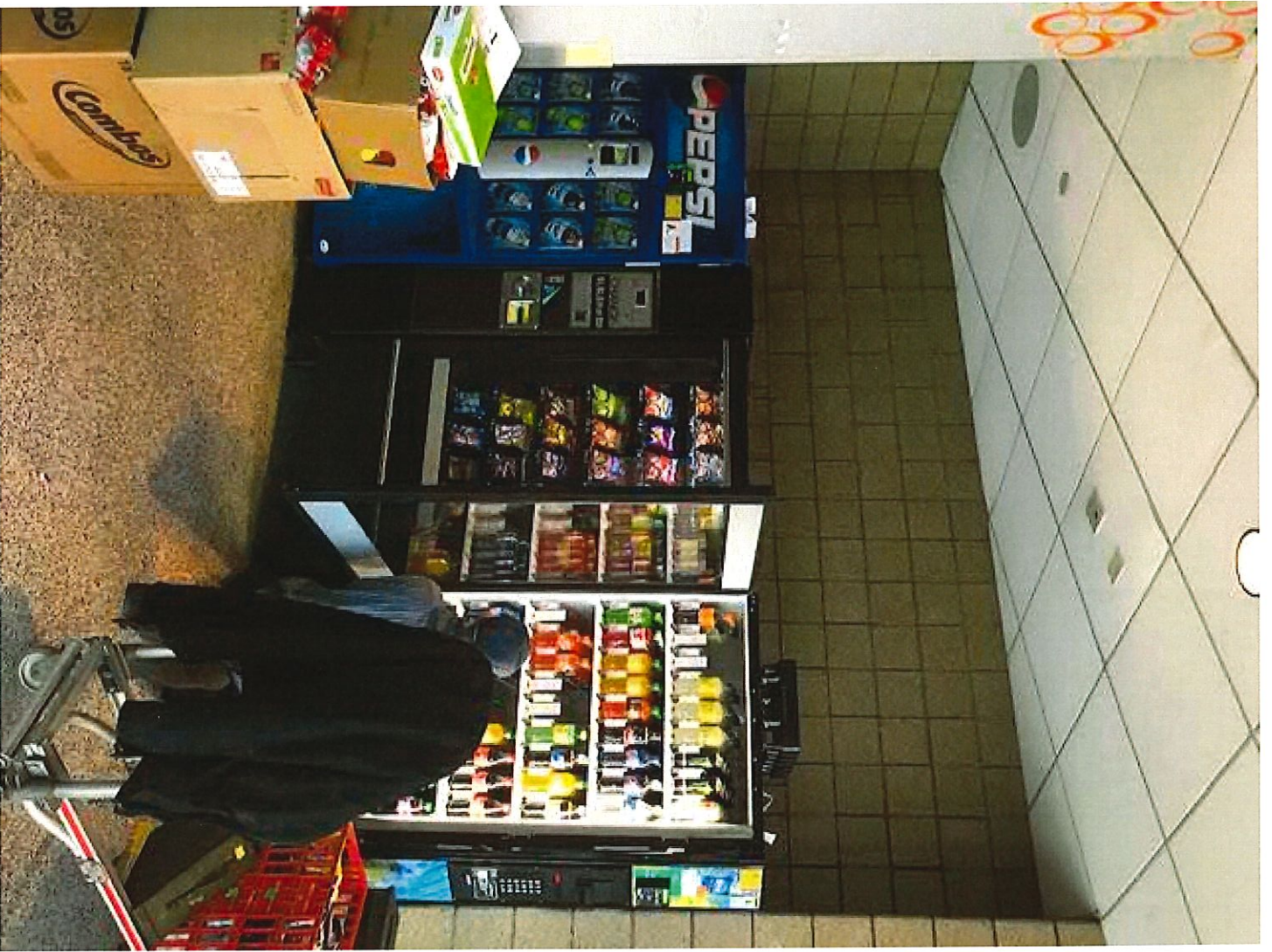
Rapid Administrative Offices
Employee Breakroom
300 Ellsworth Avenue SW
Grand Rapids, MI



Rapid Administrative Offices
Employee Breakroom
300 Ellsworth Avenue SW
Grand Rapids, MI



Rapid Central Station
Main Passenger Waiting Area
250 Grandville Avenue SW
Grand Rapids, MI
Wall will be finished off and become
new vending machine location.



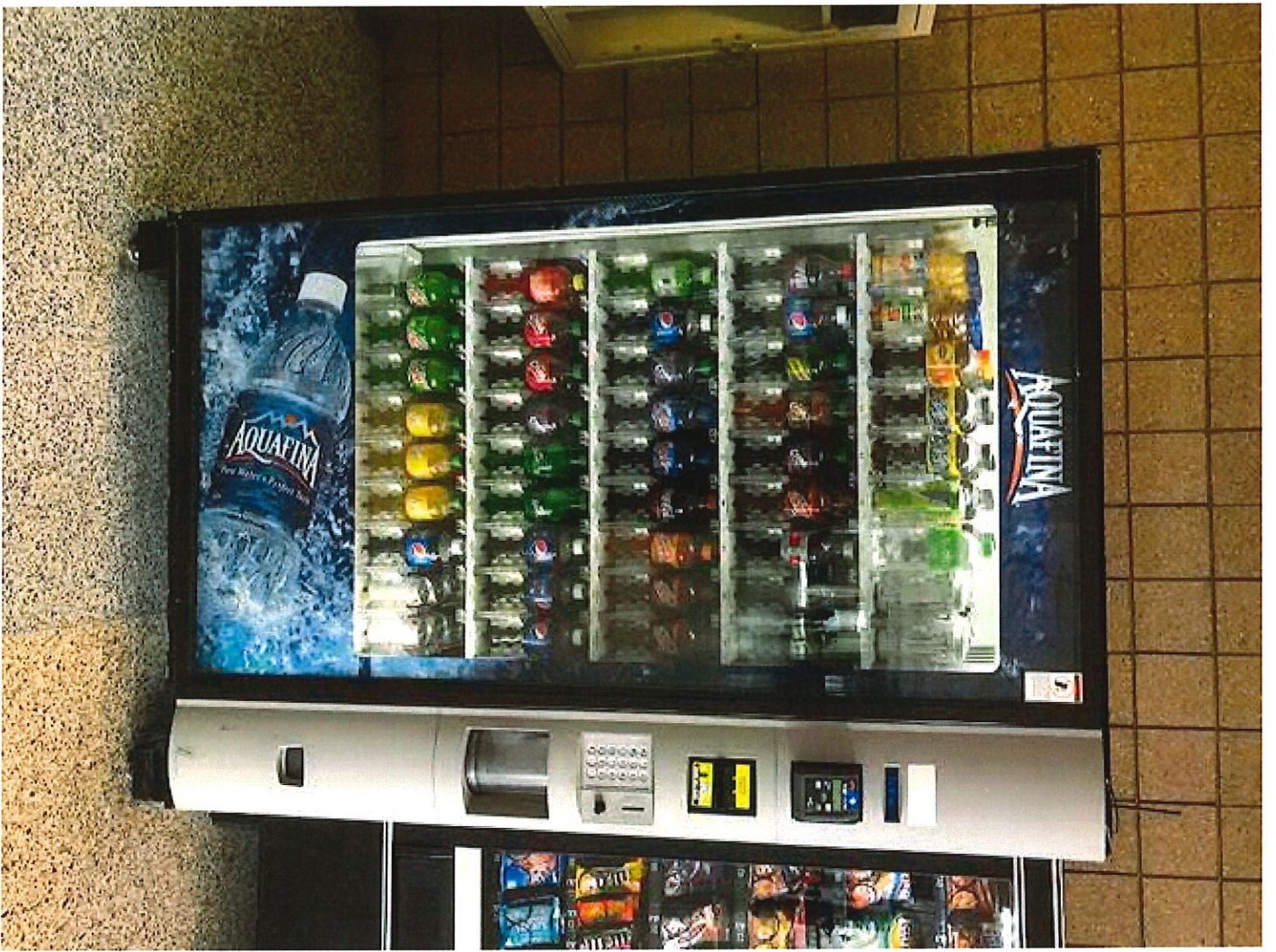
Rapid Central Station
Main Passenger Waiting Area
250 Grandville Avenue SW
Grand Rapids, MI



Rapid Central Station
Main Passenger Waiting Area
250 Grandville Avenue SW
Grand Rapids, MI



Rapid Central Station
North wall of Greyhound
250 Grandville Avenue SW
Grand Rapids, MI



Rapid Central Station
North wall of Greyhound
250 Grandville Avenue SW
Grand Rapids, MI



Rapid Central Station
North wall of Greyhound
250 Grandville Avenue SW
Grand Rapids, MI